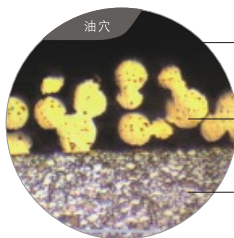
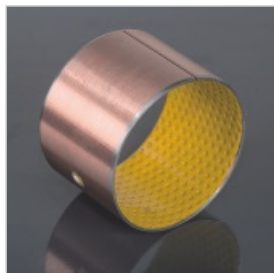


VSB20

边界润滑轴承

BOUNDARY LUBRICATION BEARINGS



- 1、聚甲醛耐磨层 0.30-0.50m m
POM Lining 0.3-0.5mm
- 2、多孔烧结铜粉层 0.20-0.35m m
Porous Bronze Powder 0.20-0.35mm
- 3、低碳钢
Low Carbon Steel

结构特性及用途

Structure Characteristics and Applications

VSB20边界润滑复合材料轴承，剖面结构(见右上图)：钢背提供机械强度和承载能力，中间烧结球形青铜粉，与表面改性聚甲醛(POM)牢固嵌合。表面轧制储油坑，从而实现了摩擦副之间的良好润滑。它具有良好的耐磨性和承载能力，钢背表面镀层防腐蚀。由于表面改性聚POM不含铅，使轴承润滑条件更干净，符合环保要求，广泛应用于汽车底盘、锻压机床、矿山机械、冶金机械、水利和轧钢行业等。

VSB20 is designed for marginal lubricating bearing. (See the above structural profile.) It is backed with copper-plated steel with porous bronze sintered on it and polymers (POM) imbedded into the bores of the bronze. The steel back provides the products made by VSB20 with stronger mechanic strength and load capability. Oil dents stamped on the surface of the polymer can achieve good lubrication between the bearing and its mating axis. It is of good anti-abrasion and load capability. The plating coating on the surface is erosion protective. And it is environment protective as no lead includes in the surface polymer POM. Products of VSB20 series are widely used on automotive chassis, forging machines, mine quarrying machines, metal melting and casting machines and in water irrigating and steel rolling industries.

物理机械性能

Physical and Mechanical Performance

性能指标 Performance Index		有关数据 Data	性能指标 Performance Index		有关数据 Data
最大承载压力P Max Load	静载 Static Load	250 N/mm ²	摩擦系数 μ Friction Coefficient	脂润滑 Grease Lubrication	0.15~0.25
	动载 Dynamic Load	140 N/mm ²		油润滑 Oil Lubrication	0.05~0.15
最大线速度V Linear Velocity	振动 Oscillation Load	70 N/mm ²	相配轴 Mating Axis	硬度 Hardness	>270 HB
	脂润滑 Grease Lubrication	2.5 m/s		粗糙度 Roughness	Ra=0.4~1.25
最高PV值 Max PV value	油润滑 Oil Lubrication	>3 m/s	工作温度 Working Temperature		-40~+120 °C
	脂润滑 Grease Lubrication	2.8 N/mm ² .m/s	导热系数 Heat-conducting Coefficient		52 W/(m·k)
		50 N/mm ² .m/s	热膨胀系数(轴向) Heat-expansion Coefficient(Axial)		$11 \times 10^{-6} \text{K}^{-1}$